

# **California Pavement Preservation (CP<sup>2</sup>) Center**

**ROGER D. SMITH  
Senior Pavement Specialist  
CSU, Chico**

**Western States Regional In-Place Recycling Conference  
Ontario, CA**

**September 13, 2012**



# Overview

- Caltrans established CP<sup>2</sup> Center on July 1, 2006
- Center task orders started January 2007 and were renewed in 2010
- Partnership with Caltrans, PPTG, and others
- With State and local budgets declining, more focus on preservation treatments



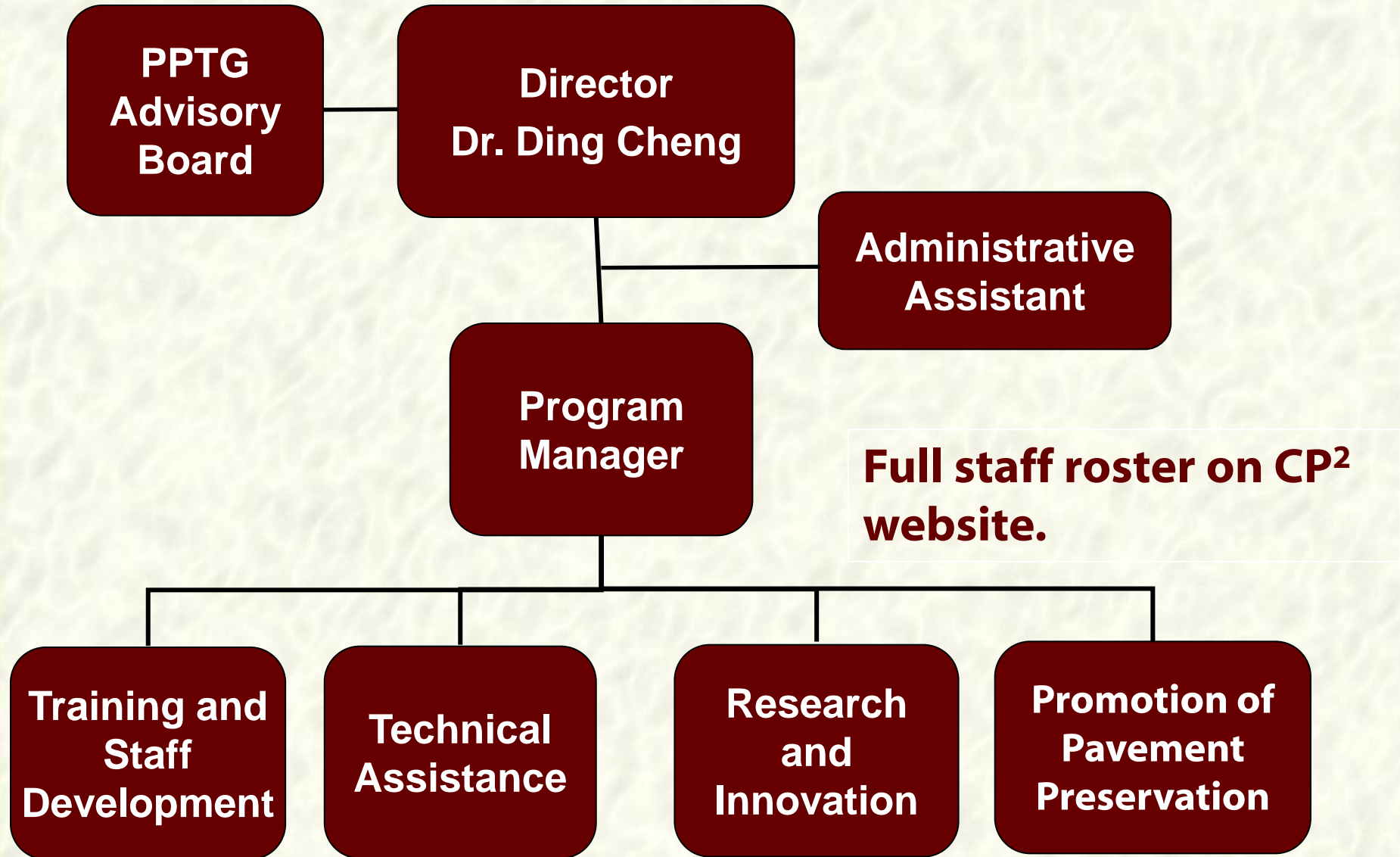
**2011 RHMA-G Warm Mix on I-5  
Near Dunnigan, CA**

# **CENTER'S GOALS/SERVICES**

- **Be a credible “3<sup>rd</sup> party” for Caltrans, local agencies and industry**
- **Evaluate new products and innovations**
- **Partner in conducting research and implementing practical findings**
- **Promote appropriate pavement preservation tools (surface treatments, overlays, recycling)**
- **Assist with forensic pavement studies**



# CENTER ORGANIZATION



# CALTRANS

- Provides the seed money for the center
- Provides direction on the operation of the center
- Identifies many of the work elements for the center
- Reviews the work of the center



# PPTG

## Pavement Preservation Task Group

- **Partnership between Caltrans, industry, agencies and academia**
- **Provides advice and technical oversight for the Center**
- **Helps identify work elements for the Center**
- **Provides feedback on the Center's operations**



# INDUSTRY

- Assists the Center with instruction
- Provides grants for equipment and scholarships
- Facilitates practical research (lab and field)
- Provides opportunities for internships





# FACILITIES – CURRENT & PLANNED

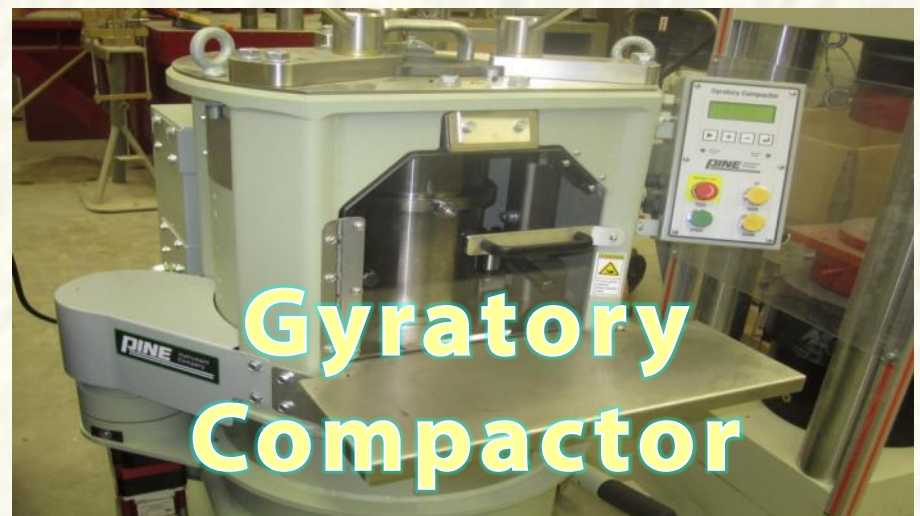
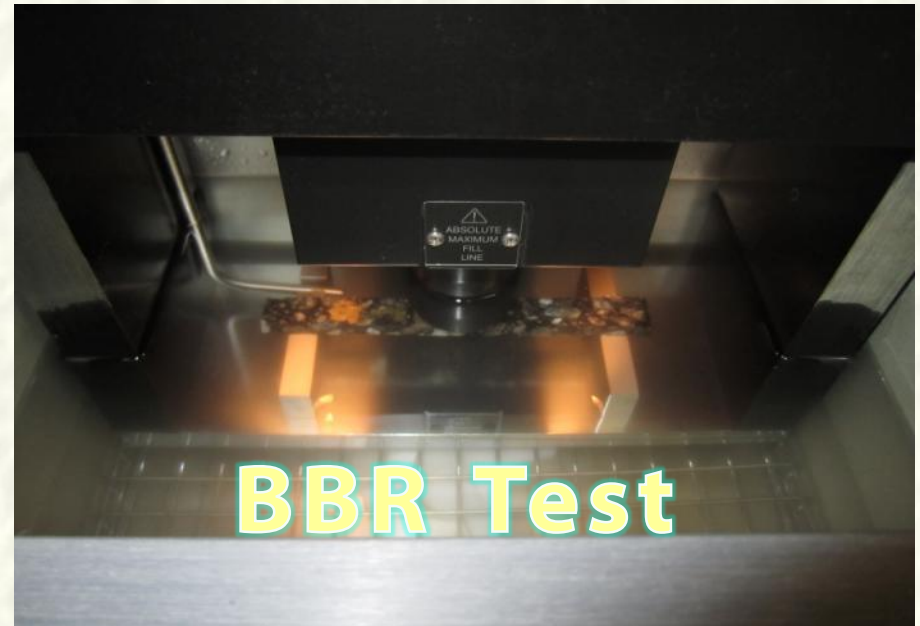
- Center is located at the University campus Chico
- Concrete labs are being updated using industry funds
- Asphalt lab is being developed
- Both labs will eventually co-exist in one facility



**Managing our investments is important and big business**



# Asphalt Lab Capabilities



# Activities from 2010 to Present

- **New contract issued in 2010 and will end in May 2013**
- **Efforts now involve 4 primary tasks**



**CP<sup>2</sup> Center 35 Main Street,  
Suite 205**

**Chico, CA 95929-0603**

# Task 1. Training and Education

- **Updating chapters of Caltrans' Maintenance Manual (MTAG)**
- **Assisting with the annual conference**
- **Conducting workshops**





# Task 2 Monitoring “Innovation” Projects

- **Warm rubber mix (RHMA) and chip seals**
  - **D3 I-5 Williams**
  - **D3 I-5 Elk Grove**
  - **D9 SR 203 Mono County**
  - **D6 AR Chip Seals**
- **In place pavement recycling (HIR) – D2 SR 299**
- **REAS – D11**
- **Scrub Seals – D9**



# Task 3 Technical Assistance

- **PPTG support**
- **Fog and rejuvenating seals**
- **Rubberized chip seals**
- **DBR using polyester backfill – SR 50 Sacramento**





# Task 4. Promotion of Pavement Preservation

- Newsletters
- Tech briefs
- Fact sheets
- Website
  - PP Database
  - Innovation Database
- Participation in conferences

The screenshot displays the CP2 CENTERS Pavement Preservation Treatment Database website. At the top left is the CP2 CENTERS logo, and at the top right is the Caltrans logo. The main navigation area contains several buttons: 'Search Treatments' (with a magnifying glass icon), 'Flexible Pavement Treatment' (with a document and star icon), 'Rigid Pavement Treatment' (with a document and star icon), and 'Composite Pavement Treatment' (with a document and star icon). Below these are three buttons for adding new treatments: 'Add New Flexible Pavement Treatment', 'Add New Rigid Pavement Treatment', and 'Add New Composite Pavement Treatment'. The bottom section features a map of the Western United States, including California, Nevada, Utah, and Arizona, with numerous red location pins. The map includes navigation controls (directional arrows, zoom in/out) and map style options (Map, Satellite, Hybrid). At the bottom left, it says 'POWERED BY Google', and at the bottom right, it says 'Map data ©2011 Europa Technologies, Google, INEGI - terms of use'.



# Other Clients

- **FHWA**
- **NCHRP**
- **Alaska DOT&PF**
- **CalRecycle**
- **Industry**
- **Local Agencies**

# Primary Contact

**Dr. Ding Cheng**

**Director**

**CP<sup>2</sup> Center**

**530-588-0155**

**[dxcheng@csuchico.edu](mailto:dxcheng@csuchico.edu)**

**<http://www.cp2info.org/center>**

***- Keeping good roads good -***



# Alaska Pavement Preservation Database and Treatment Selection Program

- ❑ **Standardizes pavement preservation strategies in Alaska**
- ❑ **Stores the pavement performance related information**
- ❑ **Integrated Google Map function**
- ❑ **Multiple pavement condition survey results**
- ❑ **Treatment strategy selection and life cycle cost analysis**
- ❑ **Knowledge could be used to improve Caltrans programs**

